



# PRODUCT OVERVIEW

# LEVEL MEASUREMENT

MAC Sensor Co.,LTD.

Changsha City,Hunan,China

<http://www.macsensor.com>

TEL: +86-731-89975636 / 89975645

## L702 Series Thread and Flange Mounting Submersible Pressure Transducer & Transmitters



### Characteristics

- ☆ Accuracy:  $\leq \pm 0.5\% \text{F.S.}$
- ☆ Wide working temperature scope
- ☆ Advanced digital temperature compensation.
- ☆ Excellent resistance against impact, overload, Shock and erosion.
- ☆ Highly-efficient lighting absorption and strong RFI & EMI resistance
- ☆ Impact resistance and disturbance
- ☆ 1.5 times range standard overload.
- ☆ 3 times range burst pressure
- ☆ CE approving

### Applications

- ★ Industrial course testing and control
- ★ Automatic testing system
- ★ well level measurement and control
- ★ Sea water level measurement and control
- ★ Sewage project and level application.
- ★ Submersible pumps system control
- ★ Oil and Fuel Tank level measuring
- ★ Automatic detection system
- ★ Building monitoring and control for water level.
- ★ Various liquid tanks pressure or level measurement.
- ★ And so on

### Profiles

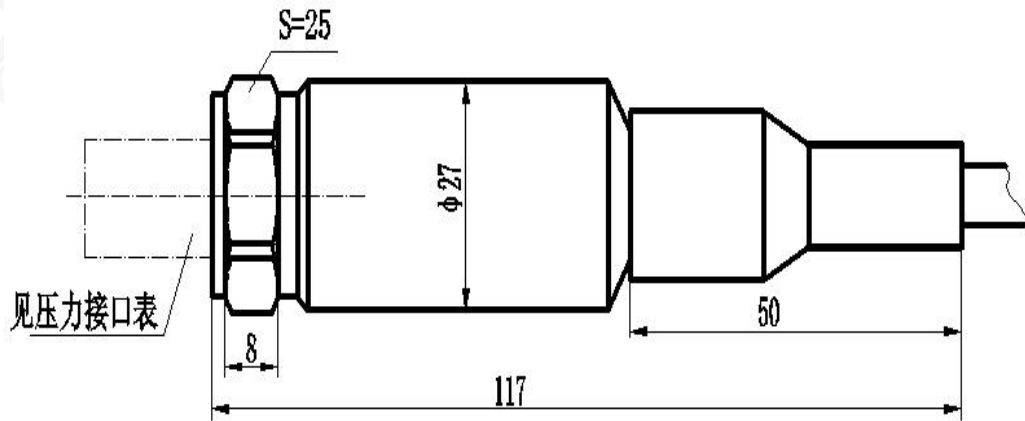
L702 is full sealed submersible level transducer/transmitter. It is made by building in high stable and reliable OEM piezo-resistive pressure sensor and high accurate circuit board into the stainless steel housing. Integrated construction and standard signal provide the user easy and convenient application in the local working place. The special cable connects with housing, can be immersed into the media for a long time.

L702 level transducer/transmitter has compact size, light weight and good stability; it can be used for water or liquid measure and control of medicine, metallurgy, electricity, mine, city water supply and drainage and hydrology, etc.

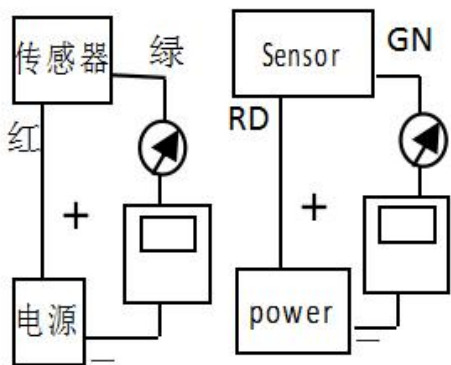
## Specifications

Model	L702					
Parameter						
Technology parameter	Cable materials are optional according request, we offer 3 type special cable as follow: PE Cable(Water Proof); PUR Cable(Oil Proof); PTFE Cable(Anti-Corrosive).					
Pressure Range	0-0.1 Bar.....50 Bar / 0-1M.....500M H2O Optional					
Safe Overload	150% F.S.(standard); 300%F.S.( marine application)					
Burst Pressure	300% F.S. (standard); 500%F.S. ( marine application)					
Accuracy (Linearity; hysteresis; Repeatability)	$\leq \pm 0.5\%F.S$ (Standard) $\leq \pm 0.25\%F.S$ Including non-lin., rep. and hys. optional					
Long-term Stability	Standard: $0.1\%F.S \pm 0.05\%$					
Working Temp.	$-30^{\circ}C \sim 80^{\circ}C$ or $-30^{\circ}C \sim 100^{\circ}C$ (Customized) Sensor And Cable submersible max temp is $100^{\circ}C$ for high temp type.					
Storage Temp.	$-40^{\circ}C \sim 100^{\circ}C$					
Temp. Compensation	$-10^{\circ}C \sim 60^{\circ}C$					
Medium compatible	Compatible with 316 Stainless Steel					
Electrical Wire	2 Wires		3 Wires		4 Wires	
Output	4~20 mA		0~5V or 1~5V	0~10 V	0.5~4.5 V	RS485    RS232
Power Supply	12~36 V (standard) Battery 6~12Vdc		8~36 Vdc	15~36Vdc	5 V DC	10~30Vdc (standard) 3.6~9Vdc (customized)
Insulate resistance	$> 100M \Omega @ 50V$					
Zero Temp. Drift	$0.003\%FS/^{\circ}C (\leq 100kPa)$ ; $0.002\%FS/^{\circ}C (> 100kPa)$					
FS Temp. Drift	$0.003\%FS/^{\circ}C (\leq 100kPa)$ ; $0.002\%FS/^{\circ}C (> 100kPa)$					
Process Connection	G1/2" male, M20*1.5 male, 1/4"NPT male; M10*1 male Flange mounting, 2", 3", 4" Flange or by customized					
Electrical connection	Fixed cable and water proof IP68;					
Response time	$\leq 10ms$					
Pressure Type	Gauge pressure, sealed gauge pressure and Absolute pressure optional.					
Certificate approval	Exd II CT6 and CE Certificate.					
EMC Standard	electromagnetic radiation:EN50081-1/-2 electromagnetic susceptibility:EN50082-2					

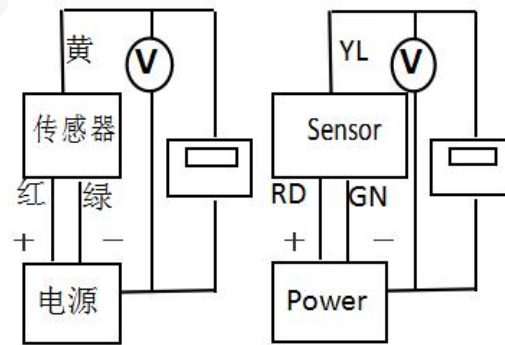
Dimension and Drawing



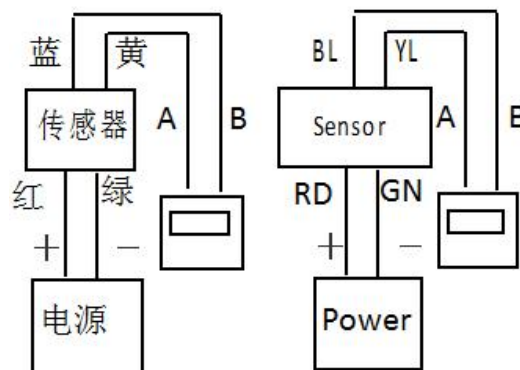
Electrical Connections



Current output, 2-wire



Voltage output, 3-wire



RS485 output

## Part Number Code Table For Pressure Range

000	0-1.0	009	0-1.9	018	0-8	027	0-50
001	0-1.1	010	0-2.0	019	0-10	028	0-60
002	0-1.2	011	0-2.1	020	0-12	029	0-80
003	0-1.3	012	0-2.5	021	0-15	030	0-100
004	0-1.4	013	0-3	022	0-20	031	0-250
005	0-1.5	014	0-4	023	0-25	032	0-300
006	0-1.6	015	0-5	024	0-30	033	0-400
007	0-1.7	016	0-6	025	0-35	034	0-500
008	0-1.8	017	0-7	026	0-40	X	Customized

Order Information

<b>P/N</b>	<b>L702</b>	<b>010</b>	<b>E5</b>	<b>S37</b>	<b>H</b>	<b>1</b>	<b>1</b>	<b>G</b>	<b>M1</b>
<b>Selection</b>	<b>(Model)</b>								
Range	Refer to <i>PART NUMBER CODE TABLE FOR RESSURE RANGE</i> on previous page and select your requested range code here.								
Output	E5=4-20mA(2 wires)    E6=0-5V(3 wires) E7=0-10V(3 wires)    E8=0.5-4.5V(3 wires) E0=1-5V(3 wires)      E11=RS485(MODBUS) E12=RS232(MODBUS)    X= By Customized								
Power Supply	S6=5Vdc                      S37=12-36Vdc S44=15-36Vdc              S17=10-30Vdc S51=8-36Vdc                X= By customized								
Pressure & Level Units	B=Bar      P=PSI      H=H <sub>2</sub> O      F=m Fuel      K=Kpa								
Accuracy	1=0.5%F.S      2=0.25%F.S (by customized)								
Cable Length	1=Cable 1m      2=Cable 2m      3=Cable 3m      X=Cable x m								
Pressure Type	G=Gauge Pressure      A=Absolute Pressure      S=Sealed Pressure								

Others Function (Optional)

M1= G 1/4" male thread mounting type  
 M2= G 1/2" male thread mounting type  
 M3=M20×1.5 male thread mounting type  
 M4= 1/4"NPT male thread mounting type  
 TA= Titanium alloy materials (high cost!)  
 P= All Plastic Housing Structure